



Great Ocean Road, Victoria

AUMEL3-01G

4D3N Melbourne Discovery

with Great Ocean Road

from **RM1,555** per adult

Package Inclusions:

- ✓ Three (3) nights' accommodation in Melbourne
- ✓ Daily hotel breakfast (depending on hotel selection)
- ✓ Return airport transfers based on shared basis – *late night surcharges apply*
- ✓ 1 Full Day Basic Great Ocean Road

Suggested Itinerary

Day 1 Arrival/ Check-in

Arrive in Melbourne, shared transfer from airport to hotel for check-in. You have the rest of the day at leisure to explore Melbourne on your own – perhaps take an optional tour?

Day 2 Melbourne - Great Ocean Road Full Day Tour [B]

Departs: Daily | Pick up: Hotel, Drop-off: Hotel

- ✓ Visit Torquay Beach
- ✓ Enjoy a complimentary morning tea.
- ✓ Stop for a selfie at the world-famous Great Ocean Road sign.
- ✓ A guided tour of koalas and parrots in their natural habitat.



CORPORATE INFORMATION TRAVEL SDN. BHD.

Tel : +603 2091 9988

Fax : +603 2091 9969

J-13-2, Pusat Perdagangan Bandar Bukit Jalil, Persiaran Jalil 1, 57000 Kuala Lumpur, Malaysia.

ROC 144126-D MOTAC NO. 0110/01

Email : askme@cit.travel

Website : www.cit.travel

- ✓ Wander the township of Apollo Bay where you can take a swim and or purchase your lunch.
- ✓ Take a guided forest walk and see some of the world's tallest trees.
- ✓ See the 12 Apostles limestone formations from beach level at The Gibson Steps.
- ✓ Enjoy the spectacular 12 Apostles lookout. This world-famous iconic lookout.
- ✓ Roam down to the Loch Ard Gorge beach and see the glorious rock formations and scenery.
- ✓ A return stop off at Colac where you can purchase some dinner from a choice of many cafes and restaurants.

Day 3 Melbourne [B]

Free and easy. Perhaps take an optional tour?






Day 4 Check-out / Departure [B]

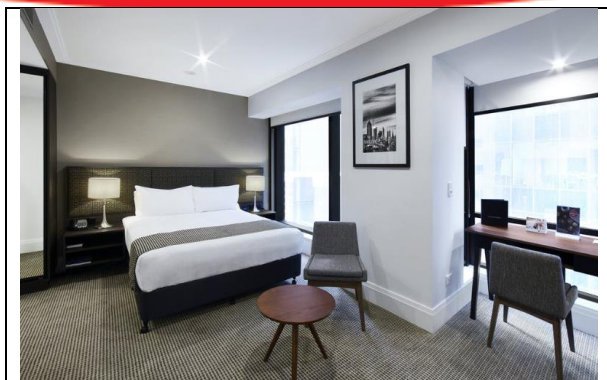
Check-out from your hotel and shared transfer to airport for departure.

PRICES QUOTED PER PERSON IN MYR

Accommodation	Twin	Triple	Single	CWB	CNB	Extension		
						Twin	Triple	Single
Oaks Melbourne on Collins 4★ (no breakfast)	1,555	N/A	2,435	N/A	N/A	330	N/A	655
Grand Chancellor Melbourne 4★	1,595	1,635	2,510	1,460	620	310	315	620
Oaks Melbourne Lonsdale Suites 4★ (no breakfast)	1,690	1,670	2,700	935	N/A	340	415	675
Avani Melbourne Box Hill Residences 4★ (no breakfast)	1,785	N/A	2,895	N/A	N/A	370	N/A	735
Mantra On Russell 4★	2,000	1,980	3,325	N/A	N/A	435	415	865
Stamford Plaza Melbourne 5★	2,315	2,315	3,955	2,060	N/A	530	520	1,055

Hotel Options

	<p>Oaks Melbourne on Collins 4★ 480 Collins Street, Melbourne VIC 3000 Website: https://www.oakshotels.com/en/oaks-on-collins</p>
	<p>Grand Chancellor Melbourne 4★ Website: https://www.grandchancellorhotels.com/hotel-grand-chancellor-melbourne</p>
	<p>Oaks Melbourne Lonsdale Suites 4★ 23 -33 Lonsdale St, Melbourne VIC 3000 Website: https://www.oakshotels.com/en/oaks-on-lonsdale</p>
	<p>Avani Melbourne Box Hill Residences 4★ 12-14 Nelson Rd, Box Hill VIC 3128 Website: https://www.avanihotels.com/en/box-hill</p>
	<p>Mantra On Russell 4★ 222 Russell Street, Melbourne, VIC 3000 Website: https://www.mantraonrussell.com.au/</p>



Stamford Plaza Melbourne 5★

111 Little Collins Street Melbourne 3000

Website:

<https://www.stamford.com.au/hotels/stamford-plaza-melbourne-hotel/>

COVID-19 DISCLAIMER NOTE:

Given the rapidly evolving nature of the international response to the COVID-19 pandemic, traveller is solely responsible to make own independent inquiries on the necessary travel documents for the intended trip.

CIT strives to assist in providing most updated information on travel regulations / restrictions. However, CIT shall not in any event be held liable for any errors, omissions, claims, losses, expenses (including legal expenses) and damages directly or indirectly relating to the denial of admission at the port of entry due to non-compliance of document requirements, government restrictions and policies, border control / closures or any other situation beyond our control due to the evolving situation.

Terms and conditions

1. This package is subject to government regulations as required for all international arrivals into Australia.
2. Bookings are subject to hotel and room availability upon confirmation.
3. Package price is **non-refundable** in the event of non-utilization, early departure or incomplete stay.
4. Booking period: up to 30 December 2022
5. Travel validity: up to 31 March 2023
6. Prices displayed are lead-in, in MYR and subject to change without prior notice, due to currency fluctuation.
7. In the event hotel is unavailable, hotel of similar class will be booked.
8. CWB - Extra bed for child in a room shared with 2 full pay adults.
9. CNB - Child in a room shared with 2 full paying adults.
10. Child age based on 3 -12 years old.
11. Package **does not include** air ticket, COVID-19 travel insurance, personal expenses, activities outside the inclusion listed and any.
12. Black-out period may apply. Surcharge may apply for public holiday.
13. Weather conditions may result in the closure of the tour in which case alternative touring arrangements will be made. Tours may not operate on public holiday.
14. Other terms & conditions apply. Visit <https://cit.travel/terms/> for more terms & conditions.

Updated: 22 Jul 2022