

# 4D3N Osaka City Break

from RM 2,169 per person

JPNTOSA3-01G



**Osaka**, Japan's vibrant second city, is famous for its lively atmosphere, mouthwatering street food, and warm hospitality. Known as the "Kitchen of Japan," it tempts visitors with takoyaki, okonomiyaki, and bustling food districts like Dotonbori.

Beyond its culinary scene, Osaka offers rich history at Osaka Castle, family fun at Universal Studios Japan, and modern shopping in Shinsaibashi and Umeda. The city's friendly locals, neon-lit nightlife, and convenient access to Kyoto, Nara, and Kobe make it an ideal base for exploring Kansai.

With its blend of tradition, entertainment, and flavour, Osaka promises an unforgettable travel experience year-round

## Package includes:

- 03 nights stay at selected hotel in Osaka
- Daily breakfast at the hotel
- Roundtrip private transfers from the airport to the hotel– *late night surcharges apply*
- Universal Studio Japan – 1 Day Studio Pass

## Suggested Itinerary

<b>Day 1</b>	<b>Arrival / Check-in</b> Arrive in Osaka, private transfer from the airport to hotel for check-in. You have the rest of the day at leisure to explore Osaka on your own – perhaps take an optional tour?
<b>Day 2</b>	<b>Universal Studio Japan – 1 Day Studio Pass (Park Entry Ticket)</b> Breakfast at the hotel. Next, make your own way to Universal Studio Japan, and enjoy the park to the fullest! <ul style="list-style-type: none"><li>✓ The Wizarding World of Harry Potter™,</li><li>✓ Minion Park,</li><li>✓ Super Nintendo World™</li><li>✓ Hollywood, Jurassic Park &amp; More</li></ul>
<b>Day 3</b>	<b>Free day</b> Breakfast at the hotel, and enjoy free day at your own leisure.
<b>Day 4</b>	<b>Check-out / Departure</b> Free at leisure until checkout time from hotel and transfer back to the airport for your onward journey.

# 4D3N Osaka City Break

from RM 2,169 per person

JPNTOSA3-01G

PRICE PER PERSON / PRICES QUOTED IN RM

Accommodation	Twin	Triple	Single	Extension		
				Twin	Triple	Single
APA Hotel Namba Shinsaibashi (3☆)	<b>2,169</b>	1,879	3,899	On Request		
Holiday Inn Osaka Namba(4☆)	2,549	2,129	4,649			
Fraser Residence Nankai Osaka (5☆)	2,829	2,689	5,219			

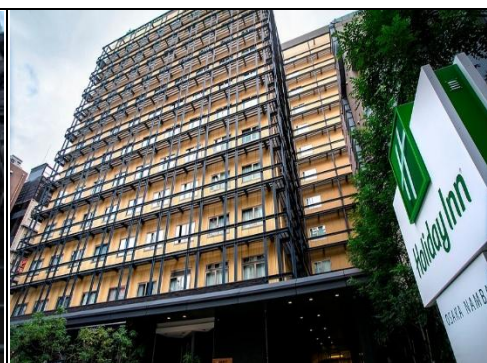
## HOTEL OPTIONS



**APA Hotel Namba Shinsaibashi 3☆**  
2 Chome-3-1 Yoyogi, Shibuya,  
Tokyo 151-0053, Japan

Website:

<https://www3.apahotel.com/hotel/kansai/osaka/namba/>



**Holiday Inn Osaka Namba 4☆**  
4 Chome-10-30 Takanawa, Minato  
City, Tokyo 108-8611, Japan

Website:

<https://www.hiosakanamba.com/en/>



**Fraser Residence Nankai Osaka 5☆**  
6 Chome-6-2 Nishishinjuku, Shinjuku  
City, Tokyo 160-0023, Japan

Website:

<https://www.frasershospitality.com/en/japan/osaka/fraser-residence-nankai-osaka/>

### Terms and conditions

- This package is subject to government regulations as required for all international arrivals into Japan.
- Bookings are subject to hotel and room availability upon confirmation.
- Min 2-to-go.
- Booking period: 28 February 2026
- Travel validity: 28 February 2026
- Package inclusions as indicated. Suggested itinerary for guidelines.
- Package **does not include** international air ticket, tipping, travel insurance, personal expenses, activities outside the inclusion listed and any incidental charges.
- Package price is **non-refundable** in the event of non-utilization, early departure or incomplete stay. In the event hotel is unavailable, hotel of similar class will be booked.
- Prices displayed are lead-in, in RM and subject to change due to currency fluctuation.
- CWB - Extra bed for child in a room shared with 2 full pay adults.
- CNB - Child in a room shared with 2 full paying adults.
- Rates are not valid during events/exhibition period.
- Black-out period may apply.
- Other terms & conditions apply. Visit <https://cit.travel/terms/> for more terms & conditions.

Updated: 03 Sep 2025